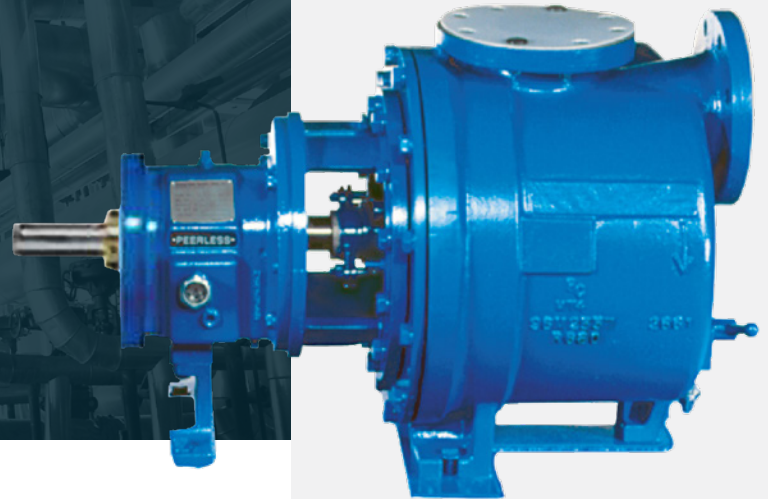




# SELF-PRIMING PUMP

Series 8796



Manufactured for a wide range of flow and head requirements, the Peerless Pump 8796 Series pumps are price-competitive and engineered for lower operating costs. Save on installation, because these pumps lift liquids from a depth of up to 20 feet without the aid of foot / check valves or auxiliary pumps. Save on inventory costs, because the back-pullout assembly is interchangeable with our 8196 ANSI Series. All 8796 Series power ends are backed by our three-year warranty.

## FEATURES

### Our special self-priming casing design

permits the 8796 pumps to maintain a prime as well as to expel any air in the suctioned liquid via the self-venting top centerline discharge.

### The unique two-piece pull-apart casing

allows for quick replacement of the inner volute. The inner volute itself can be provided in a variety of wear-resistant materials, such as CD4MCu.

**Our impellers** are a fully open design that resists clogging. Shear is reduced, resulting in lower losses when pumping viscous fluids. All impellers are also available in an optional keyed and bolted design.

**The bearing frame** is coated internally to ensure zero contamination of the oil or bearings from the inside.

### The VBXD® labyrinth oil seal by Inpro,

designed especially for Peerless Pump, provides both static and dynamic sealing to protect bearings from environmental contamination.

**All bearing fits** are precision-bored, and all bearings meet or exceed the minimum ANSI L10 life of 17,500 hours.

**The shaft** is available in solid shaft construction or with a sleeve. The threaded area of the shaft is protected against corrosion with an O-ring seal on the impeller.

**Integral back pump-out vanes** reduce stuffing box pressure, prolonging mechanical seal or packing life.

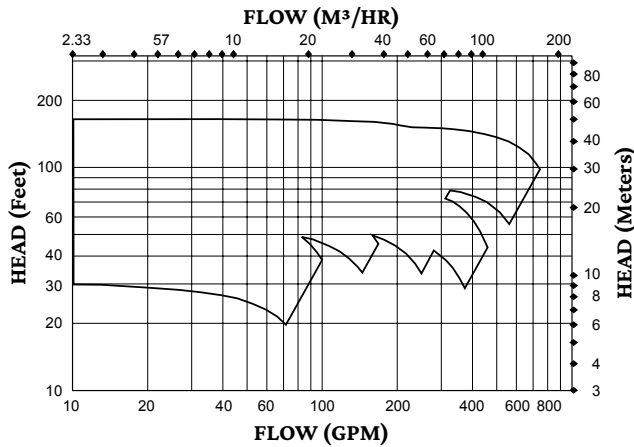
## APPLICATIONS

- Acids, chemicals or volatile liquids
- Liquids with large quantities of entrained air or gas, such as in condensate systems or industrial waste treatment
- Tank car unloading
- Mine and tunnel de-watering
- Any application where the pump doesn't have flooded suction or has to be located away from or above the liquid source

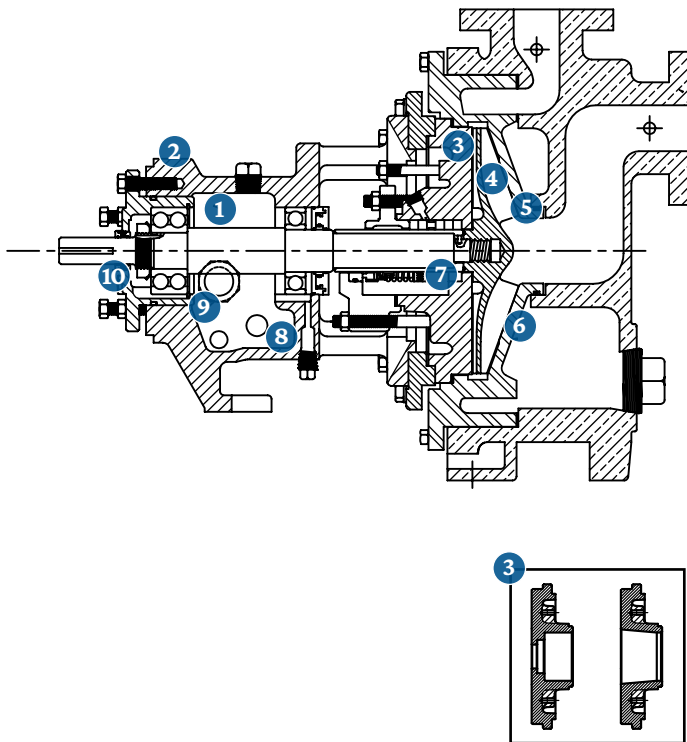
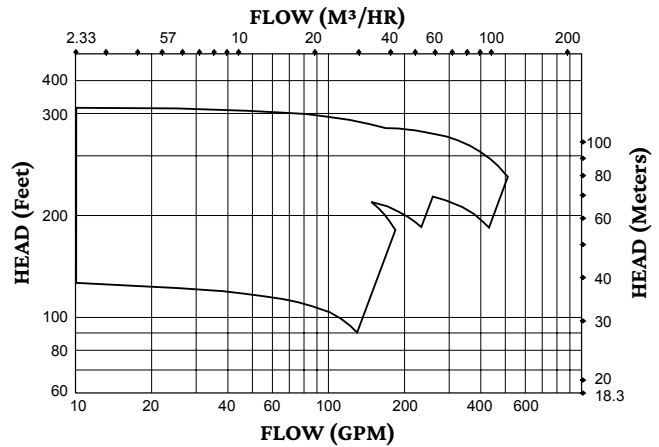
## SPECIFICATIONS

<b>Capacities</b>	Up to 700 gpm (159 m <sup>3</sup> /h)
<b>Head</b>	Up to 400 feet (122 meters)
<b>Pressure</b>	Up to 375 psi (2,586 kPa)
<b>Horsepower</b>	Up to 40 hp (30 kW)
<b>Temperature</b>	Up to 500°F (260°C)
<b>Drives</b>	Motors
<b>Liquids</b>	Clean liquid sumps, chemical and petroleum transfers
<b>Materials</b>	Ductile iron, 316SS, CD4MCu, Alloy 20

## 8796 SERIES RANGE — 1750 RPM



## 8796 SERIES RANGE — 3550 RPM



- 1 Bearing Frame**  
Coated internally to protect oil.
- 2 Bosses**  
For vibration-monitoring and / or temperature-monitoring devices.
- 3 Optional Seal Chambers**  
Big bore and taper bore available for extra seal cooling.
- 4 Investment Cast Impeller**  
Open design to reduce clogging. Coated for protection and maximum efficiency.
- 5 Replaceable Inner Volute**  
Reduces maintenance cost.
- 6 Casing**  
Two-piece, pull-apart design for ease of maintenance.
- 7 Renewable Shaft Sleeve**  
Positively driven, hook-type with a free end for expansion under varying temperatures.
- 8 Enlarged Oil Sump**  
Improves heat transfer for more effective oil cooling.
- 9 Bullseye**  
One-inch sight glass for easy, accurate monitoring of oil levels. Optional: Trico® Oiler.
- 10 Standard Inpro VBXD® Bearing Isolators**  
Protect bearings from environmental contamination in both static and dynamic modes.

Peerless Pump designs tough, versatile products to meet your pumping needs. The 8796 Series delivers variety, durability, standardized options and configurations unequalled in the industry.

For more information, contact your local authorized Peerless Pump distributor or visit [peerlesspump.com](http://peerlesspump.com)



2005 DR. MARTIN LUTHER KING JR. ST.  
INDIANAPOLIS, IN 46202

P 317.925.9661 F 317.924.7388 [PEERLESSPUMP.COM](http://PEERLESSPUMP.COM)

Flyer-042420  
This flyer's contents subject to change without notice  
© Peerless Pump Company