

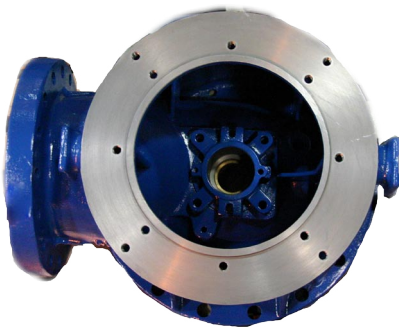
Peerless Pump

Cast Discharge Heads



Introducing a completely new engineered cast discharge head, designed to meet the needs of your customer.

- Heavy Duty; Designed for stability
- Incorporating the best features of our previous cast head designs into one configuration:
 - Round ANSI Bases for Barrel Applications
 - Taller Riser for Easier Maintenance
 - Elevated Hand Holes for Easier Access
 - Dual Motor Registers, Eliminating Adapters
 - Column Flanges Adaptable to Multiple Column Sizes
 - Shaft Couplings Standard for All Shaft Sizes on 4" - 12" Heads and Vertical Hollow Shaft Motors
 - Improved Rigidity for Use in Variable Speed Applications
 - Increased Availability (Less Models Required to Stock)
 - Stuffing Box and Tube Nut Registers Standardized
 - Stronger Lifting Lugs Than Previous S & C Designs
 - Designed to Reduce Hydraulic Friction Losses



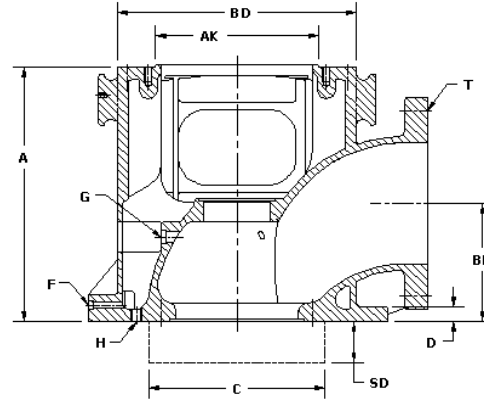
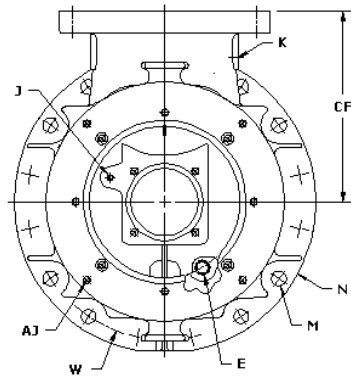
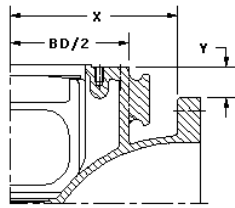
Specifications

Capacities: @ max flow up to 10,700 gpm (2,430 m³/hr)
Head: @ zero flow up to 924 feet (281 meters)
Pressure: @ zero flow up to 400 psi (28.1 kg/cm², 2,757 kPa)
Horsepower: Up to 1600 hp (1,193 kW)
Temperature: Up to 180 °F (82 °C)
Drives: Vertical Electric Motor, Gear Drive
Materials: Cast Iron and other materials available upon request



Cast Discharge Head

10x10x20 Ghead Shown



HEAD SIZE & TYPE SEE NOTE 8	N O T E	BF	CF	A	D	DISCHARGE FLANGE ANSI FLAT FACED			BASE MOUNTING 4 HOLES					NEMA DRIVER MOUNTING			BELOW BASE CLEARANCE REQUIRED		DISCHG FLANGE CLEAR- ANCE		AUXILIARY CONNECTIONS SEE NOTE 6										
						SIZE & ANSI	T HOLE DRILLING & TAPPING STRADDLE C/LINE		M	STD NO.	ANSI NO.	N DIA	W DIA	BD	AK	AJ DRILLING/TAPPING (4) HOLES		NOTE 7		E- NPS	F- NPT	G- NPT	H- NPS	J- NPT	K- NPT						
						RATING	#	THD	BOLT CIRC							THREAD	BOLT CIRCLE	ANGULAR POSITION	CO _{1A}							SD	X	Y			
2.5x2.5x10S	5	3.81	5.00	9.25	0.75	2.5 NPT	--	---	---	0.56	4	--	12.5 Sq	9.25 Sq	10.0	8.25	3/8-16 UNC	9.12	STR CL	6.25	1.00	-	-	1/4	1/4	3/4	--	--	--		
2.5x3x10S	5	3.81	5.00	9.25	0.75	2.5 NPT	--	---	---	0.56	4	--	12.5 Sq	9.25 Sq	10.0	8.25	3/8-16 UNC	9.12	STR CL	6.25	1.00	-	-	1/4	1/4	3/4	--	--	--		
4x4x10C	1	5.75	8.50	16.38	1.12	4-125 LB	8	5/8-11UNC	7.50	0.88	8	8	13.5	11.75	10.0	8.25	3/8-16 UNC	9.12	STR CL	8.00	1.25	-	-	1/4	1/4	3/4	3/4	--	1/4		
4x4x10CHP	2	5.75	8.50	16.38	1.12	4-250 LB	8	3/4-10UNC	7.88	0.88	8	8	13.5	11.75	10.0	8.25	3/8-16 UNC	9.12	STR CL	8.00	1.25	-	-	1/4	1/4	3/4	3/4	--	1/4		
6x6x12G	1	7.50	11.44	17.00	1.00	6-125 LB	8	3/4-10UNC	9.50	1.00	4	12	19.0	17.00	12.0	8.25	3/8-16 UNC	9.12	ON CL & STR CL	11.00	4.00	-	-	3/4	3/8	-	3/8	1/4	1/4		
6x6x12GHP	2					6-250 LB	12		10.62																						
8x8x16.5G	1	8.25	14.25	18.12	1.12	8-125 LB	8	3/4-10UNC	11.75	1.12	8	16	23.5	21.25	12.0	8.25	3/8-16 UNC & 5/8-11 UNC	@9.12 ON CL & @14.75 ON/STR CL	13.25	4.25	-	-	3/4	3/8	3/4	1/2	1/4	1/4			
8x8x16.5GHP	2					8-250 LB	12		13.00																						
10x10x20G	1	9.75	15.75	21.00	1.25	10-125 LB	12	7/8-9 UNC	14.25	1.25	8	16	25.0	22.75	20.0	13.50	5/8-11UNC	14.75 ON/STR CL & 18.25 STR CL	15.25	5.00	-	-	3/4	3/8	3/4	1/2	1/4	1/4			
10x10x20GHP	2					10-250 LB	16		1-8UNC																				15.25		
12x12x20G	1	12.00	17.50	22.75	1.25	12-125 LB	12	7/8-9 UNC	17.00	1.25	4	20	27.5	25.00	20.0	13.50	5/8-11UNC	14.75 ON/STR CL & 18.25 STR CL	17.50	5.00	-	-	3/4	3/8	1	1/2	1/4	1/4			
12x12x20GHP	2					12-250 LB	16		1 1/8-7UNC																				17.75		
14x14x24.5S	3	11.50	14.75	22.25	1.75	14-125 LB	12	1-8 UNC	18.75	1.00	4	--	28.0 Sq	25.00 Sq	24.5	13.50	5/8-11UNC @ 14.75 & 5/8-11UNC @ 18.25 & 3/4-10UNC @ 23.00	STR CL	19.25	6.00	-	-	3/4	3/8	1	1/2	1/4	--			
14x14x24.5SHP	4					14-250 LB	20		1-1/8-7 UNC																				20.25		
16x16x30.5S	3	12.75	20.00	21.50	3.50	16-125 LB	16	1-8 UNC	21.25	1.00	4	--	38.0 Sq	32.00 Sq	30.5	22.00	3/4-10 UNC	26.00 & 28.75	STR CL	21.25	4.00	-	-	3.0	18.6	3/4	1/2	2.00	1.00	1/4	--
16x16x30.5SHP	4					16-250 LB	20		1-1/4-7 UNC																						

MAXIMUM WORKING PRESSURE @ 150 DEG F MAX TEMPERATURE
NOTE 1 = 200 PSI
NOTE 2 = 400 PSI
NOTE 3 = 150 PSI
NOTE 4 = 300 PSI
NOTE 5 = 175 PSI

NOTE 7 THIS IS THE CLEARANCE FOR TOP COLUMN FLANGE.
OTHER FACTORS MAY DICTATE THE MINIMUM FLOOR
OPENING SIZE REQUIRED.
NOTE 8 S & C HEAD & 6x6x12 G HEAD CONFIGURATIONS MAY VARY
VISUALLY FROM DIAGRAM.

NOTE 6 E - AIR LINE, F- STUFFING BOX DRAIN, G- PRELUBE OR PRESSURE TAP, H-DRAIN
J -PRESSURE TAP (OR PRELUBE ON 6x6x12), K-PRESSURE TAP

MODEL# DEFINITION: DISCHARGE x COLUMN x DRIVER BD
ALL DIMENSIONS ARE IN INCHES

Subject to change without notice



Peerless Pump Company
P.O. Box 7026
Indianapolis, IN 46207-7026
(317)925-9661, Fax: (317)924-7388
www.peerlesspump.com